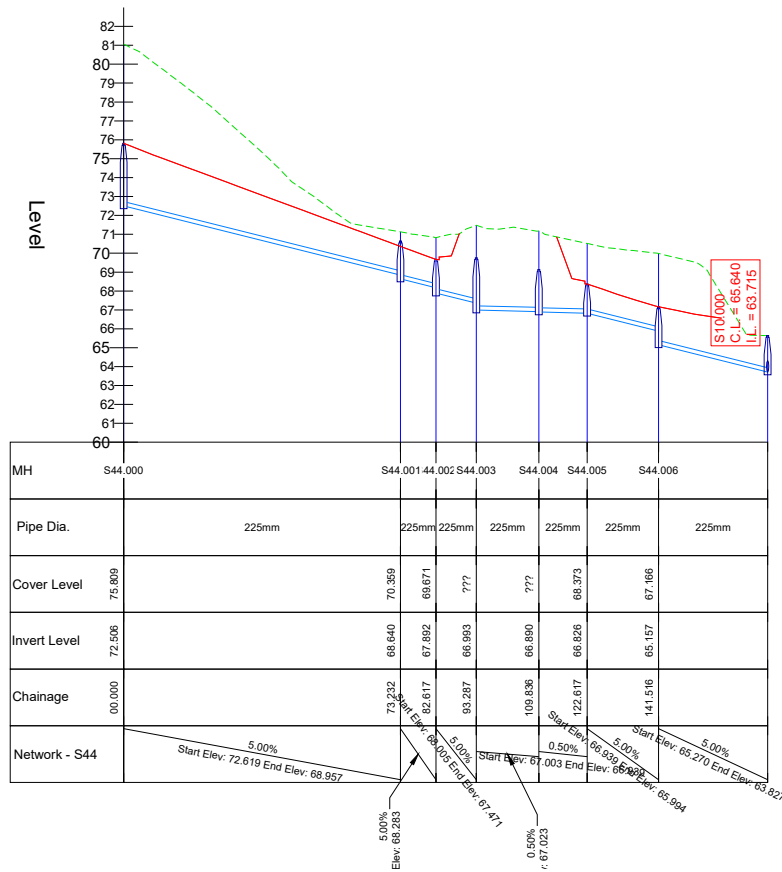
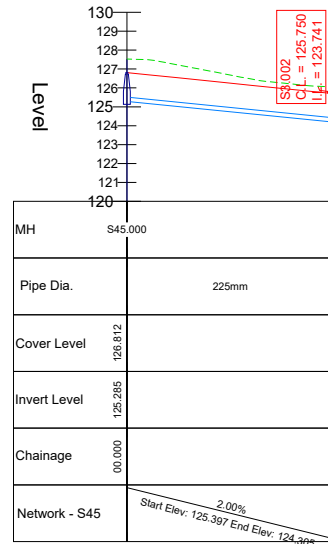


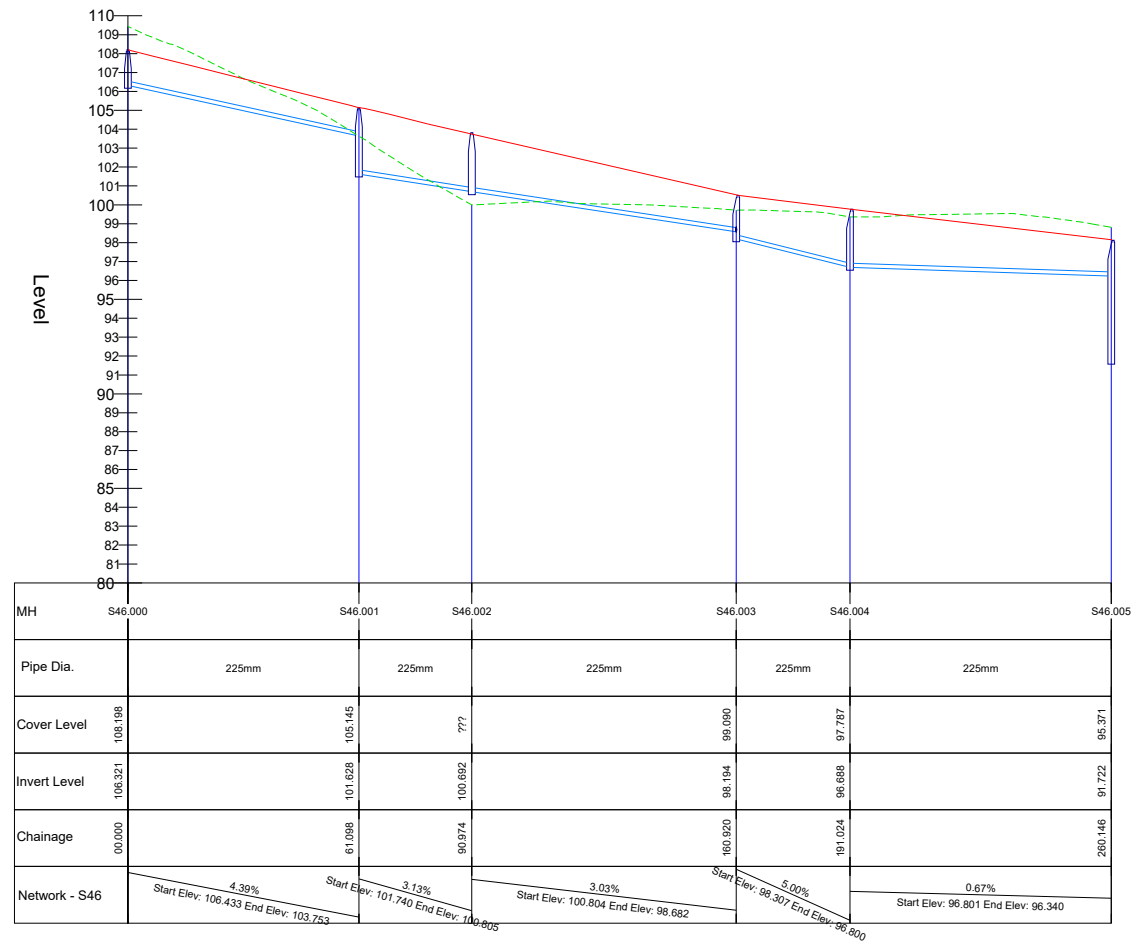
ALIGNMENT - S44 - LONGSECTION



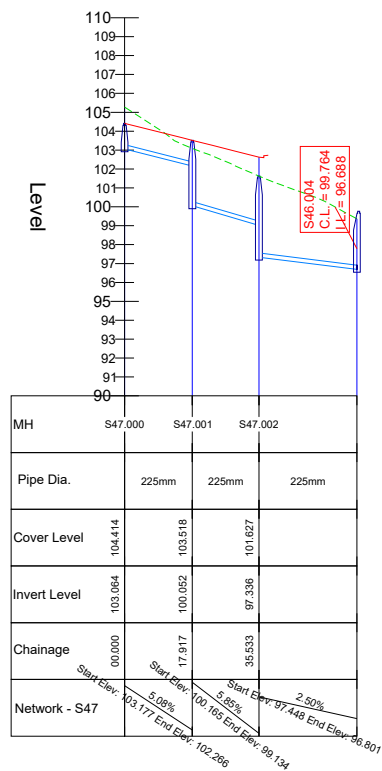
ALIGNMENT -S45 - LONGSECTION



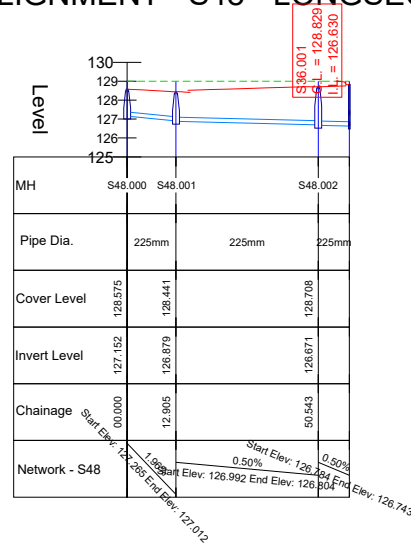
ALIGNMENT - S46 - LONGSECTION



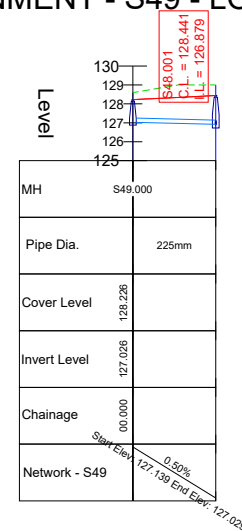
ALIGNMENT - S47 - LONGSECTION



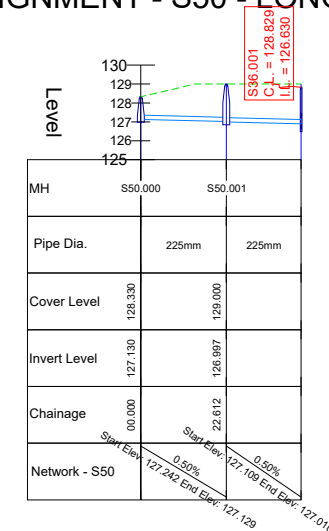
ALIGNMENT - S48 - LONGSECTION



ALIGNMENT - S49 - LONGSECTION



ALIGNMENT - S50 - LONGSECTION



NOTES:

All dimensions in metres.
Do not scale from drawing.
For any discrepancies found please consult with design office.
This drawing should be read in conjunction with all contract drawings, documents and specifications.

Gravity sewer pipe material to be concrete in accordance with Irish Water Wastewater Code of Practice, section 3.13.1

- Existing ground -----
- Proposed surface -----
- Storm pipeline -----

Rev	By	Date	Description

Drawing Status: PLANNING
NOT CERTIFIED FOR CONSTRUCTION

Project Title: Longview Estate Development

Drawing Title: Longsections - Storm

Client: Longview Estates Ltd.

M.H.L. & Associates Ltd.
Consulting Engineers
Carrig Mór House,
10 High Street,
Douglas Road,
Cork
Tel: 021-4840214
Fax: 021-4840215
E-Mail: info@mhl.ie

Designed: SM	Drawn: SM	Checked: KM
Scale: H: 1:1000, V: 1:200 @ A1 H: 1:2000, V: 1:400 @ A3	Date: Nov 2019	
Job No: 17066HD	Drawing No: LHD_SLS_P10	Revision: